

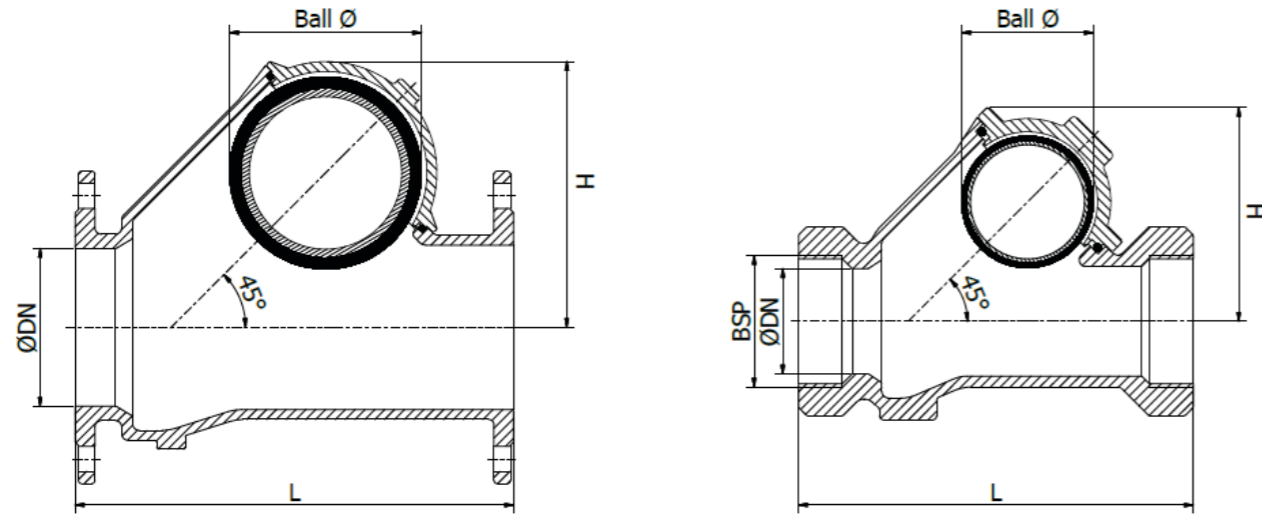
Ball check valve type 4900

DN/NPS:	DN32 - DN600
Working pressure:	PN10
Marking:	EN GJS 400 -15
Test standard:	EN 12334

A resilient seated non-returnable valve with sinking ball for preventing back flow and allowing flow passage with minimum friction loss. The ball check valve is suitable for use in polluted media as the ball shaped valve prevents the built up of dirt. The valve is maintenance friendly through a large opening. The ball check valve may be used in waste water applications, in power plants and in the process industry.



Ball check valve Dimensions



DN	L in mm	H in mm	Thread	Ball Ø in mm
DN32 thread	140	78	G1¼"	48
DN40 thread	140	78	G1½"	48
DN50 thread	180	98	G2"	60
DN65 thread	260	143	G2½"	95
DN80 thread	260	143	G3"	95
DN50	180	98		60
DN65	250	143		95
DN80	260	143		95
DN100	300	174		120
DN125	350	250		175
DN150	400	250		175
DN200	500	326		240
DN250	600	400		300
DN300	700	472		360
DN350	800	570		420
DN400	900	654		480
DN500	1100	840		600
DN600	1300	950		720

Ball check valve Parts list

Pos.	Parts	Material
1	Cover	Ductile iron
2	Ball	Ductile iron vulcanised with NBR
3	O-ring	NBR
4	Body	Ductile iron
10	Bolt	AISI 304
11	Washer	AISI 304
12	Nut	AISI 316

